

EVIO Labs Medford (pka Kenevir Research)
 540 East Vilas Road, Suite F, Central Point, OR 97502
 541-668-7444 / OLCC 010-1001626980D / www.EVIOLabs.com

Vegan Unwind Caramel
Seventh Hill Releaf LLC
 For Info Only



Confident Cannabis ID: 2008KR0013.3919

Sample ID: M201202-02

Matrix: Other

METRC Batch #:

Sampling Method/SOP: Client

Date Sampled: NA

Date Accepted: 08/04/20

Harvest/Process Lot ID:

Batch ID:

Batch Size (g):

Unit for Sale:

Harvest/Production Date:

Cannabinoid Analysis

FOR INFORMATIONAL USE ONLY - NOT FOR REGULATORY PURPOSES

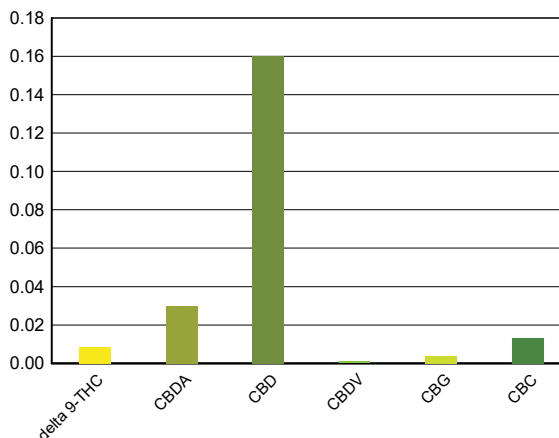
Date/Time Extracted: 08/05/20 09:16

Analysis Method/SOP: SOP.T.40.020

Date/Time Analyzed: 08/05/20 22:41

Cannabinoids	LOQ(%)	mg/g	% weight	Cannabinoid Profile
Total THC ((THCA*0.877)+Δ9THC)		0.09	0.009	
Total CBD ((CBDA*0.877)+CBD)		1.86	0.186	

THCA	0.002	< LOQ	< LOQ
delta 9-THC	0.002	0.09	0.009
delta 8-THC	0.002	< LOQ	< LOQ
THCV	0.002	< LOQ	< LOQ
CBGA	0.002	< LOQ	< LOQ
CBDA	0.002	0.30	0.030
CBD	0.002	1.60	0.160
CBDV	0.002	< LOQ	< LOQ
CBN	0.002	< LOQ	< LOQ
CBG	0.002	0.04	0.004
CBC	0.002	0.13	0.013
THCV-A	0.002	< LOQ	< LOQ
CBDV-A	0.002	< LOQ	< LOQ
CBCA	0.002	< LOQ	< LOQ
Sum of tested Cannabinoids	0.002	2.16	0.216



"Total THC" and "Total CBD" are calculated values and are an Oregon reporting requirement (OAR 333-064-0100). For Cannabinoid analysis, only delta 9-THC, THCA, CBD, CBDA are ORELAP accredited analytes. Cannabinoid values reported for plant matter are dry weight corrected; Oregon Water Activity action level is 0.65Aw and Oregon Moisture Content action level is 15%. Samples above limit will be highlighted RED; FD = Field Duplicate; LOQ = Limit of Quantitation.

Stephanie Moon
 Laboratory Director - 8/6/2020

EVIO Labs Medford (pka Kenevir Research)
 540 East Vilas Road, Suite F, Central Point, OR 97502
 541-668-7444 / OLCC 010-1001626980D / www.EVIOLabs.com

Quality Control

Batch: M20H016 - SOP.T.30.050 Prep for Cannabinoids

Blank(M20H016-BLK1)			Extracted: 08/05/20 09:16		Analyzed: 08/05/20 21:51		
Analyte	Result	LOQ	Recovery Limits	Analyte	Result	LOQ	Recovery Limits
THCA	< LOQ	0.002 (%)	< LOQ	delta 9-THC	< LOQ	0.002 (%)	< LOQ
delta 8-THC	< LOQ	0.002 (%)	< LOQ	THCV-A	< LOQ	0.002 (%)	< LOQ
THCV	< LOQ	0.002 (%)	< LOQ	CBDA	< LOQ	0.002 (%)	< LOQ
CBD	< LOQ	0.002 (%)	< LOQ	CBDV-A	< LOQ	0.002 (%)	< LOQ
CBDV	< LOQ	0.002 (%)	< LOQ	CBG	< LOQ	0.002 (%)	< LOQ
CBGA	< LOQ	0.002 (%)	< LOQ	CBN	< LOQ	0.002 (%)	< LOQ
CBC	< LOQ	0.002 (%)	< LOQ	Sum of tested Cannabinoid:	< LOQ	0.002 (%)	< LOQ

LCS(M20H016-BS1)			Extracted: 08/05/20 09:16		Analyzed: 08/05/20 22:08		
Analyte	% Recovery	LOQ	Recovery Limits	Analyte	% Recovery	LOQ	Recovery Limits
THCA	89.5	(%)	70-130	delta 9-THC	90.8	(%)	70-130
CBDA	88.7	(%)	70-130	CBD	99.1	(%)	70-130



Stephanie Moon
 Laboratory Director - 8/6/2020