

EVIO Labs Medford (pka Kenevir Research)
 540 East Vilas Road, Suite F, Central Point, OR 97502
 541-668-7444 / OLCC 010-1001626980D / www.EVIOLabs.com

Elektra Info Only



Confident Cannabis ID: 1909KR0216.4401

Sample ID: M191338-04

Matrix: Hemp

METRC Batch #:

Sampling Method/SOP: SOP.T.20.010

Date Sampled: 09/30/19 09:00

Date Accepted: 09/30/19

Harvest/Process Lot ID:

Batch ID:

Batch Size (g):

Unit for Sale:

Harvest/Production Date:

Cannabinoid Analysis

FOR INFORMATIONAL USE ONLY - NOT FOR REGULATORY PURPOSES

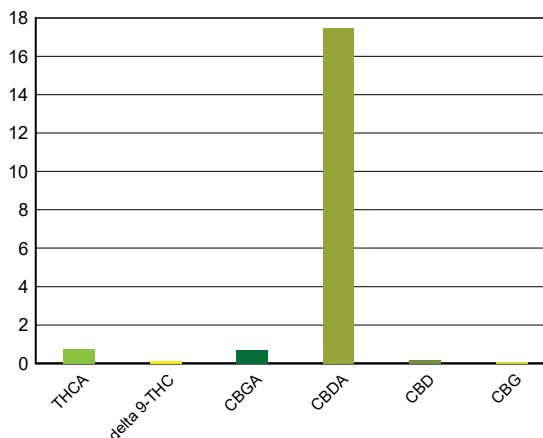
Date/Time Extracted: 10/04/19 14:02

Analysis Method/SOP: SOP.T.40.020

Date/Time Analyzed: 10/05/19 09:28

| Cannabinoids | LOQ(%) | mg/g | % weight | Cannabinoid Profile |
|---------------------------------------|--------|---------------|---------------|---------------------|
| Total THC ((THCA*0.877)+Δ9THC) | | 7.71 | 0.771 | |
| Total CBD ((CBDA*0.877)+CBD) | | 155.21 | 15.521 | |

| | | | |
|----------------------------|-------|--------|-------|
| THCA | 0.100 | 7.33 | 0.733 |
| delta 9-THC | 0.100 | 1.28 | 0.128 |
| CBGA | 0.100 | 6.82 | 0.682 |
| CBDA | 0.100 | 175.00 | 17.5 |
| CBD | 0.100 | 1.73 | 0.173 |
| CBDV | 0.100 | < LOQ | < LOQ |
| CBN | 0.100 | < LOQ | < LOQ |
| CBG | 0.100 | < LOQ | < LOQ |
| CBC | 0.100 | < LOQ | < LOQ |
| CBDV-A | 0.100 | < LOQ | < LOQ |
| Sum of tested Cannabinoids | 0.100 | 192.00 | 19.2 |



"Total THC" and "Total CBD" are calculated values and are an Oregon reporting requirement (OAR 333-064-0100). For Cannabinoid analysis, only delta 9-THC, THCA, CBD, CBDA are ORELAP accredited analytes. Cannabinoid values reported for plant matter are dry weight corrected; Oregon Water Activity action level is 0.65Aw and Oregon Moisture Content action level is 15%. Samples above limit will be highlighted RED; FD = Field Duplicate; LOQ = Limit of Quantitation.

Stephanie Moon
 Laboratory Director - 10/8/2019

EVIO Labs Medford (pka Kenevir Research)
 540 East Vilas Road, Suite F, Central Point, OR 97502
 541-668-7444 / OLCC 010-1001626980D / www.EVIOLabs.com

Quality Control

Batch: M19J030 - ODA Exhibit B/ SOP.T.30.050 Prep for Cannabinoids

| Blank(M19J030-BLK1) | | | Extracted: 10/04/19 14:02 | | Analyzed: 10/05/19 05:12 | | |
|----------------------------|--------|-----------|---------------------------|-------------|--------------------------|-----------|-----------------|
| Analyte | Result | LOQ | Recovery Limits | Analyte | Result | LOQ | Recovery Limits |
| THCA | < LOQ | 0.100 (%) | < LOQ | delta 9-THC | < LOQ | 0.100 (%) | < LOQ |
| CBDA | < LOQ | 0.100 (%) | < LOQ | CBD | < LOQ | 0.100 (%) | < LOQ |
| CBDV-A | < LOQ | 0.100 (%) | < LOQ | CBDV | < LOQ | 0.100 (%) | < LOQ |
| CBG | < LOQ | 0.100 (%) | < LOQ | CBGA | < LOQ | 0.100 (%) | < LOQ |
| CBN | < LOQ | 0.100 (%) | < LOQ | CBC | < LOQ | 0.100 (%) | < LOQ |
| Sum of tested Cannabinoid: | < LOQ | 0.100 (%) | < LOQ | | | | |

| LCS(M19J030-BS1) | | | Extracted: 10/04/19 14:02 | | Analyzed: 10/05/19 05:30 | | |
|------------------|------------|-----|---------------------------|-------------|--------------------------|-----|-----------------|
| Analyte | % Recovery | LOQ | Recovery Limits | Analyte | % Recovery | LOQ | Recovery Limits |
| THCA | 98.3 | (%) | 70-130 | delta 9-THC | 103 | (%) | 70-130 |
| CBDA | 99.9 | (%) | 70-130 | CBD | 106 | (%) | 70-130 |



Stephanie Moon
 Laboratory Director - 10/8/2019